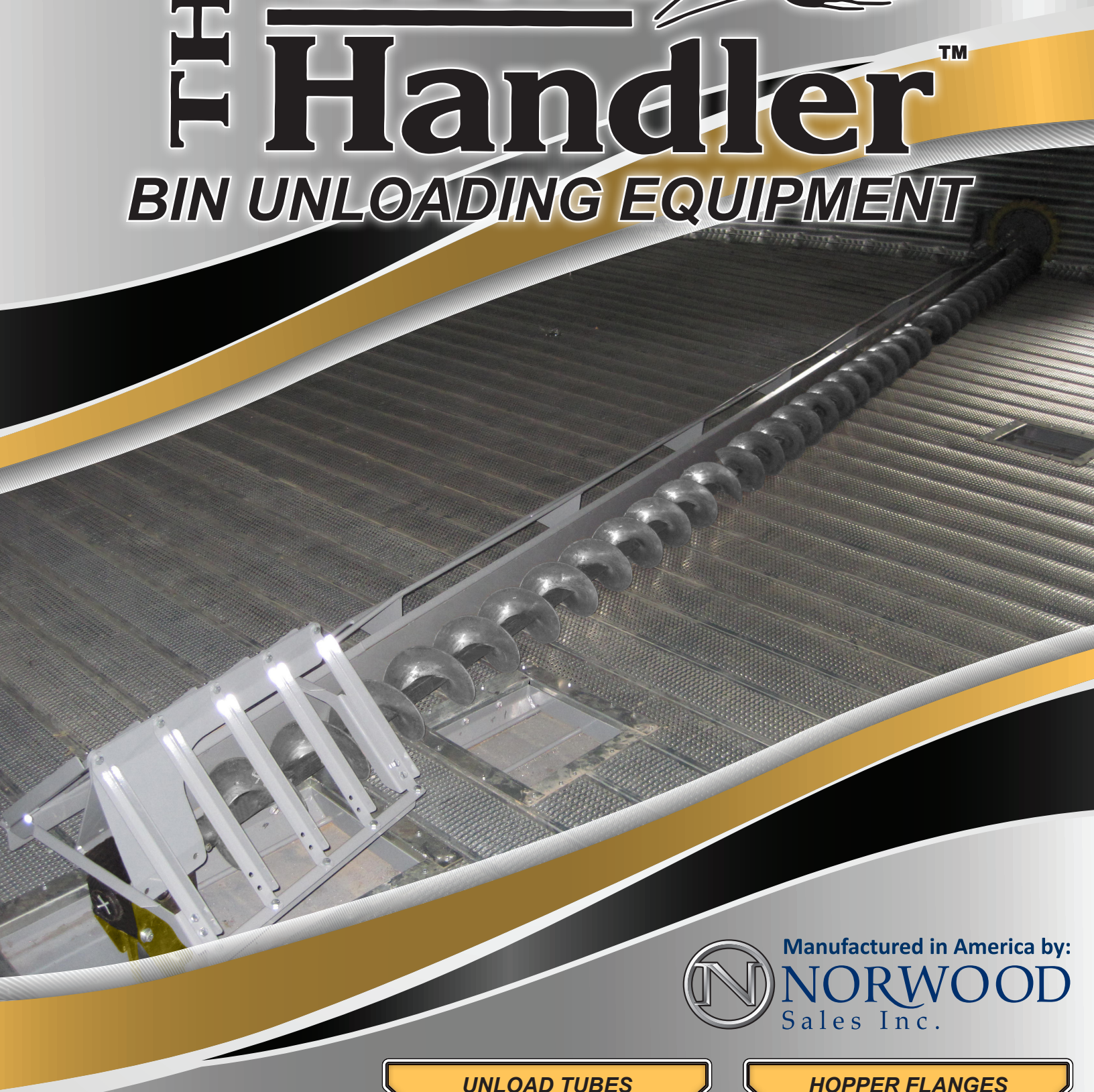


THE Grain Handler™

BIN UNLOADING EQUIPMENT



Manufactured in America by:
NORWOOD
Sales Inc.

UNLOAD TUBES

HOPPER FLANGES

BIN WALL PLATES

UNLOAD AUGER FLIGHTING

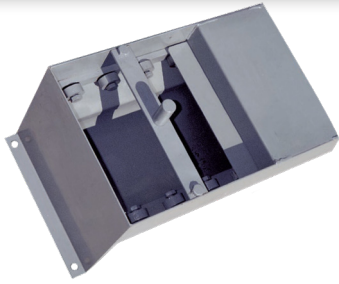
POWERHEADS

BIN SWEEPS

POWERSWEEPS

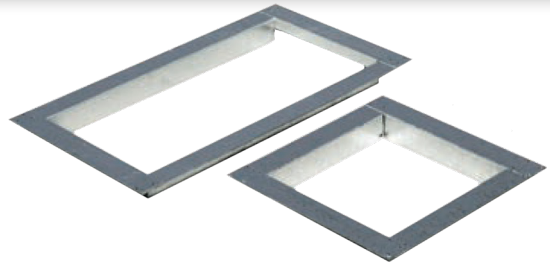
PARTS & ACCESSORIES

HOPPERS



All **hoppers** have a full 12" x 12" opening to allow for maximum grain flow into the tube. The center well has a removable sweep pivot pin, and all additional hoppers have guard bars. 10 machined steel rollers are installed in each hopper to assure easier gate opening.

HOPPER FLANGES



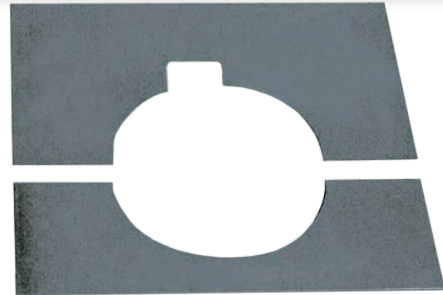
Hopper flanges seal the area around the hoppers(s) when installing unload tubes in a drying/aeration system. Quality galvanized steel with welded seams allow for a positive seal to help prevent grain from leaking into the open area under the floor.

UNLOAD AUGER FLIGHTING



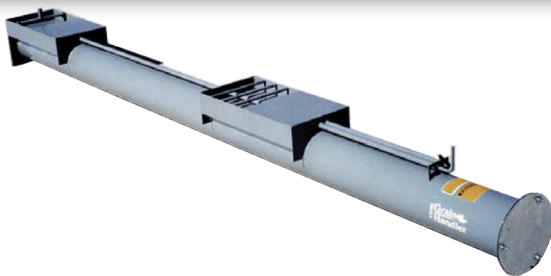
Unload auger flighting is manufactured from high quality mild steel components. Design is right hand full pitch, standard welds. All unload auger flighting is cut-to-length at the factory and are ready to be installed. Left hand pitch and brush flighting is available.

BIN WALL PLATES



Bin wall plates seal the area where the unload tube exits the bin wall. The top half overlaps the bottom half by 1/2" for proper water shed. Manufactured from heavy duty galvanized steel.

BIN UNLOAD TUBES



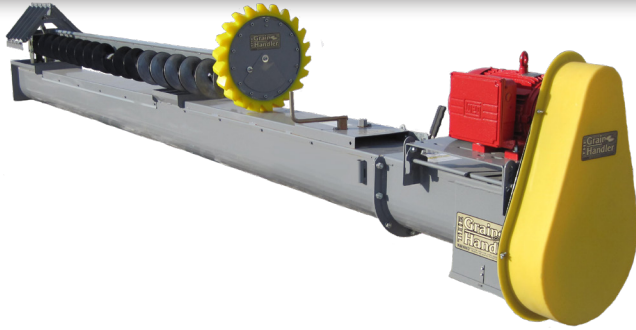
Available in single, double, triple, (or more) hoppers to unload your storage bins. These tubes are factory assembled for complete accuracy. Manual control rods are included. All welded, mild steel construction assures you of quality, long lasting equipment. Unload tubes are assembled and are ready to be install in your concrete foundation or under aeration/drying floors in your new or existing storage facilities. Available in 6", 8" and 10" diameter models to fit 15' through 48' diameter bins.

ROTATING BIN SWEEPS



Available in 4" diameter (6" systems), 5" diameter (8" systems), or 7" diameter (10" systems). They include the driven sheaves, drive shaft, drive belt(s), belt guard, motor mount, wheel end drive and assembly hardware. The motor mount is an easy off design with one-pin removal. Sweeps can be ordered to allow the backboard to be adjusted to fit 2 and 3 consecutive bin diameters. The adjustable backboard is shortened or lengthened with only 4 set screws. **No special tools are required and no parts to lose.**

U-TROUGH POWERSWEEPS



Labor saving Powersweeps are available in 8" and 10" models that fit 18' through 60' diameter bins. The complete assembled unit includes the U-trough, rack and pinion controls to operate the slide gates, unload auger flighting, hopper flanges, sweep assembly, and end drive wheel. The sweep and unload system are driven with a single motor from outside of the bin. Power is transmitted through the heavy duty auger flighting and cast iron gearbox system. The top gearbox has a 1.5:1 reduction to slow the sweep auger speed. One lever on the outside of the bin engages and disengages the sweep.

Features

- Rack & Pinion gate controls
- All welded construction and assembly
- Cast iron gearbox with bevel gears
- Power lock-out on shift lever
- Bin wall stop
- One pin, removable sweep assembly
- Sweep hanger bearings
- 12" x 14" center hopper with 10 steel rollers
- 12" x 12" intermediate hopper(s) with 10 steel rollers
- Internal truss on all sweep backboards
- Ladder truss on 42' and larger sweeps
- High density rubber sweep wheel
- Vertical adjustment on sweep backboard
- Horizontal adjustment on sweep end for close to wall operation

9" STANDARD DRIVE WHEEL



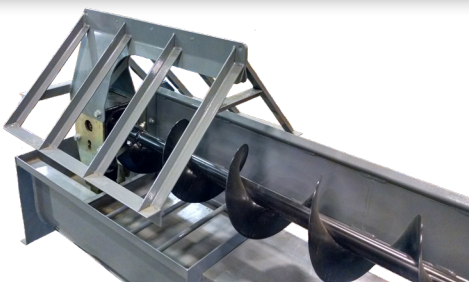
Constructed with a durable vulcanized rubber wheel. Heavy duty sealed bearing. 1:1 drive ratio.

BUZZSAW DRIVE WHEEL



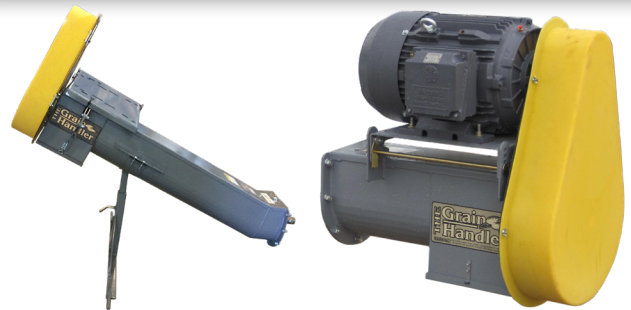
Constructed with a heavy duty replaceable abrasion resistant molded urethane drive wheel. The aggressive tread designs knocks down clumps along the bin wall. Unique replaceable planetary gear drive system inside of a sealed housing. 32:1 drive ratio.

CLUMP BUSTER



Heavy duty welded steel construction. Can be attached to gearbox sweep. (No need to remove from bin) Keeps large clumps out of your main sweep, saving time and money.

U-TROUGH POWERHEAD



Available in either a horizontal or 23° inclined model. All welded construction with removable rodent covers. Adjustable motor mount. Greaseless bearings and a urethane belt guard for long life.

PowerSweep System Specifications

Bin Diameter	# of Hoppers	Horsepower Requirements				BU. / Inch Depth in Grain Bin
		8"		10"		
		Horizontal	Inclined	Horizontal	Inclined	
18'	2	5.0	7.5	7.5	10.0	18
21'	2	5.0	7.5	7.5	10.0	24
24'	2	5.0	7.5	7.5	10.0	31
27'	2	7.5	7.5	7.5	10.0	40
30'	3	7.5	10.0	7.5	15.0	49
33'	3	7.5	10.0	10.0	15.0	60
36'	3	7.5	10.0	10.0	15.0	71
42'	4	10.0	10.0	10.0	15.0	96
48'	4	10.0	15.0	15.0	20.0	126
54'	4	-	-	20.0	30.0	
60'	5	-	-	25.0	30.0	197

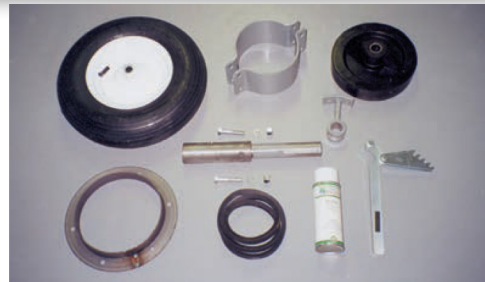
* All specifications are subject to change without notification *

Standard Rotating Bin Sweeps

Bin Dia	Horsepower Requirements		
	4" for 6" Tubes	5" for 8" Tubes	7" for 10" Tubes
18'	1.5	1.5	3.0
21'	1.5	2.0	3.0
24'	1.5	2.0	3.0
27'	2.0	2.0	3.0
30'	2.0	3.0	5.0
33'	2.0	3.0	5.0
36'	2.0	3.0	5.0
42'	3.0	3.0	5.0
48'	3.0	3.0	5.0

* All specifications are subject to change without notification *

PARTS & ACCESSORIES



Angle flanges, drive shafts, bearings, belts, sheaves and bushing replacement parts, etc are all available through your local dealers.

WARRANTY

All Grain Handler products are covered by the original manufactures one year warranty on all manufactured components. Purchased components (belts, sheaves, etc) are limited to the original manufactures stated warranty. See operators manual or price guide for specific details.

Powersweep Capacities

Speed (RPM)	8"	10"
425	2,200 bph	4,700 bph
500	2,600 bph	5,600 bph

* Capacities are using clean, dry, free flowing wheat with full open gates. Using a 1750 rpm motor with 3.2" sheave @ 400 rpm and 4" sheave @ 500 rpm.

Dealer:



11202 38th St. South
Horace, ND 58047

Local: 1 (701) 588-4000
Toll Free: 1 (800) 446-0316
www.norwoodsales.com

